



Ⓛ Left Side



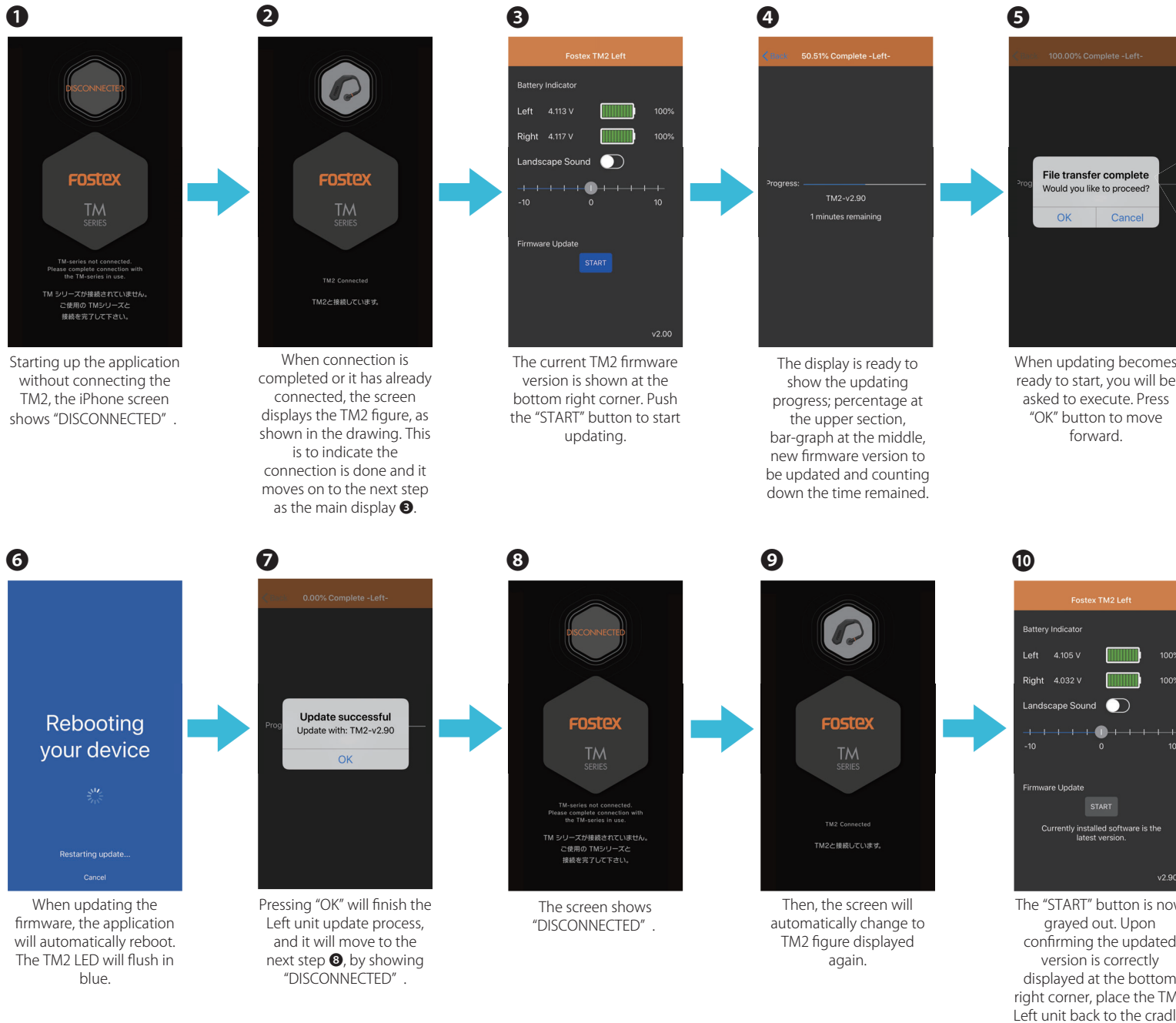
This application can be downloaded from App Store.

Update Procedure (Left unit)

-Start updating from Left unit Ⓛ first-



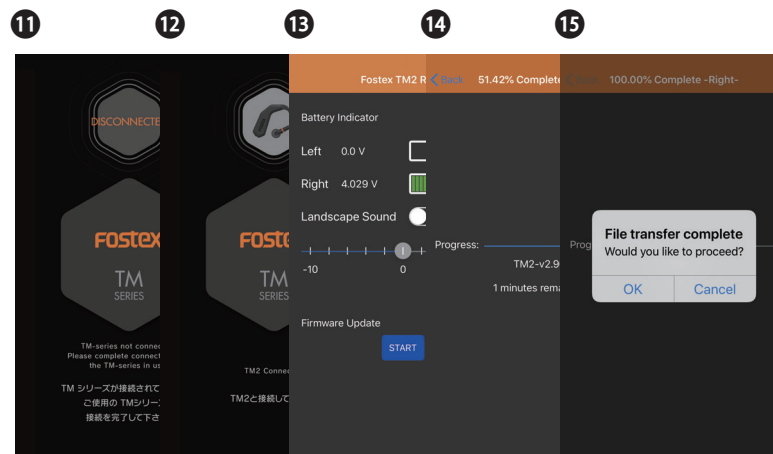
When updating the firmware, connect the USB cable and supply power to the cradle during the whole updating process. Also make sure that the batteries of both Left and Right TM2 main units are charged enough. First, remove Both Left and Right units from the cradle. As in the ordinary pairing method, connect the Left unit to the iPhone first and then interlink Left and Right units.



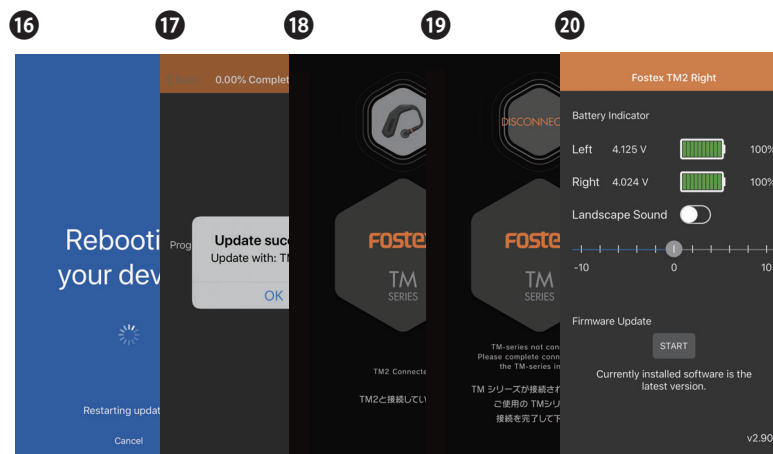


Ⓡ Right Side

Update Procedure (Right unit)
-Automatically swap from
Left unit Ⓛ to Right unit Ⓡ-



➡ Proceed with updating the Right unit as in the same method as done with Left unit. ➡



After completing both units update...

After completing firmware update on both units, before start using the TM2, place them back to the cradle and charge the battery on both units.

*Estimated time required for entire firmware update process: Approx. 10 minutes for both Left and Right units together.