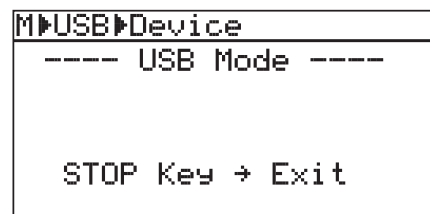
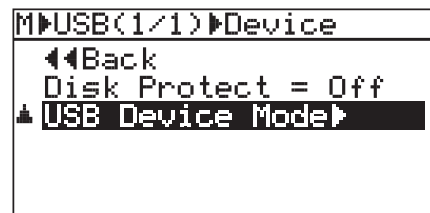
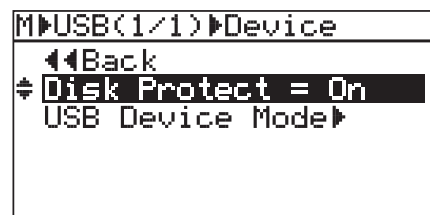
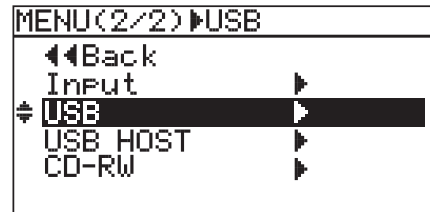
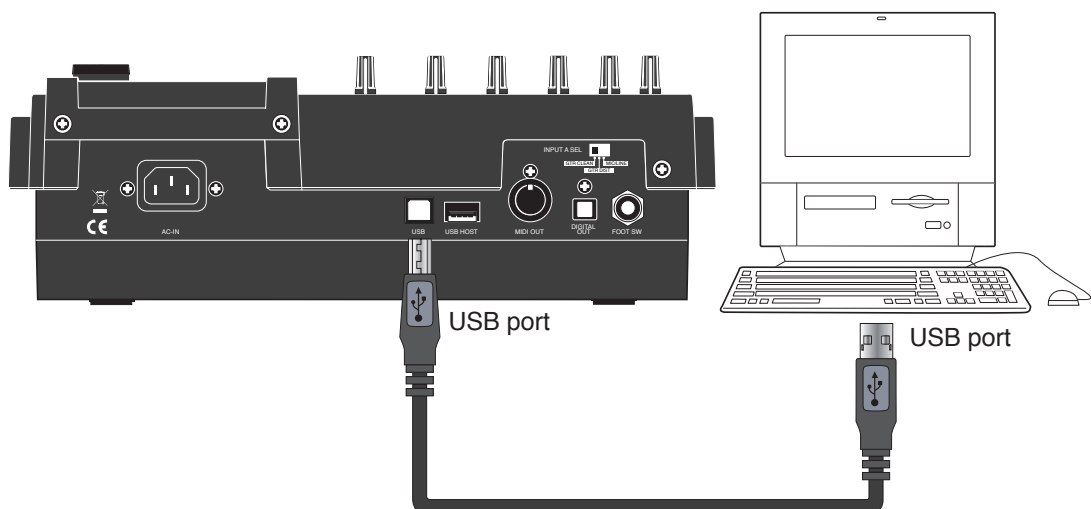


## SOFTWARE UPDATE PROCEDURES

- 1) Connect the AC power cable to the AC IN connector. The MR-8HD/CD power switch starts flashing in red.
- 2) Press the MR-8HD/CD power switch. MR-8HD/CD starts booting up and the power switch is lit solid in red. After a short while, the normal display appears on the LCD.
- 3) Press the [MENU/ENTER] dial to enter the MENU mode.
- 4) Rotate the [MENU/ENTER] dial and select the “USB” menu.
- 5) Press the [MENU/ENTER] dial.
- 6) Rotate the [MENU/ENTER] dial and select the “Disk Protect” menu.
- 7) Press the [MENU/ENTER] dial and set “Disk Protect” to “Off” by rotating the [MENU/ENTER] dial. Then, press the [MENU/ENTER] dial. With this setting, the Disk Protect mode is turned off indicating the condition that the software update file can be copied to the MR-8HD/CD internal HDD.
- 8) Rotate the [MENU/ENTER] dial to select the “< < Back” menu and press the [MENU/ENTER] dial.
- 9) Rotate the [MENU/ENTER] dial and select the “USB Device Mode” menu.
- 10) Press the [MENU/ENTER] dial. If MR-8HD/CD is correctly put into the USB mode, the display on the right will appear on the LCD. Now MR-8HD/CD is ready to connect to PC or Macintosh.
- 11) Connect the USB cable from the MR-8HD/CD USB port to PC on which Windows XP/2000 is running or Macintosh on which OS X is running.



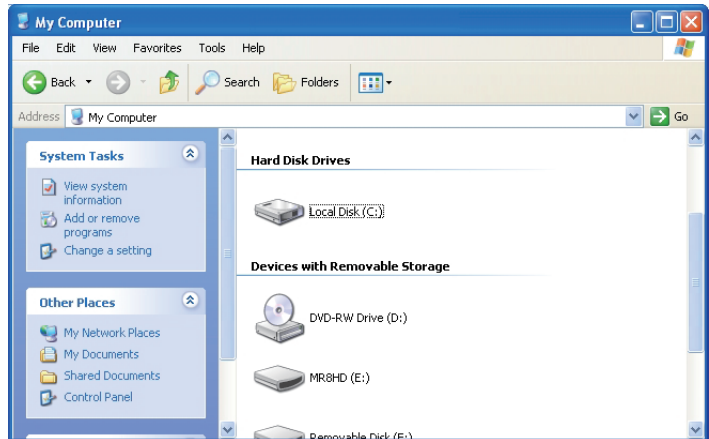
**CAUTION:** MR-8HD/CD can be connected to PC on which Windows XP/2000 is running or Macintosh on which OS X is running for software update as well as audio data transfer. Of course PC/ Macintosh has to be equipped with a USB port.



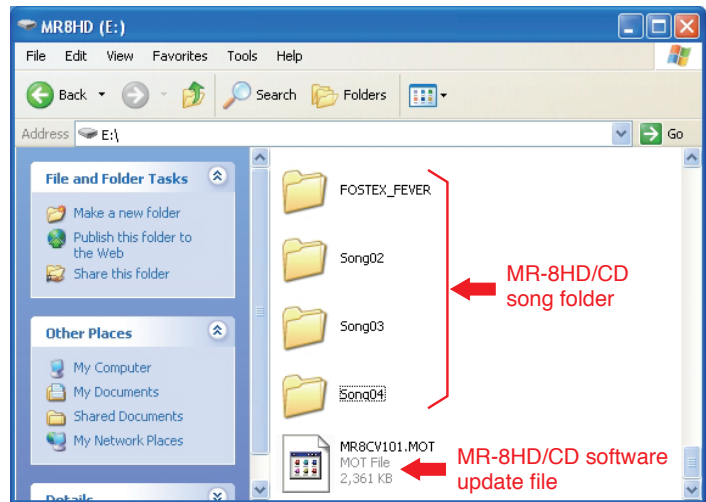
12) PC or Macintosh recognizes MR-8HD/CD as an external removable disk.

(a) Windows XP/2000

The example on the right indicates that MR-8HD/CD is recognized as a removable disk (F) in the My Computer on Windows XP PC. Unzip the software update file with “zip” extension (e.g. MR8HDCD\_V101.zip) normally sent together with a technical bulletin. If you do so, a software update file (e.g. MR8CV101.MOT) will be created. Place a newly created software update file with “MOT” (motorola format) extension in the root directory tree of the Removable disk (F).

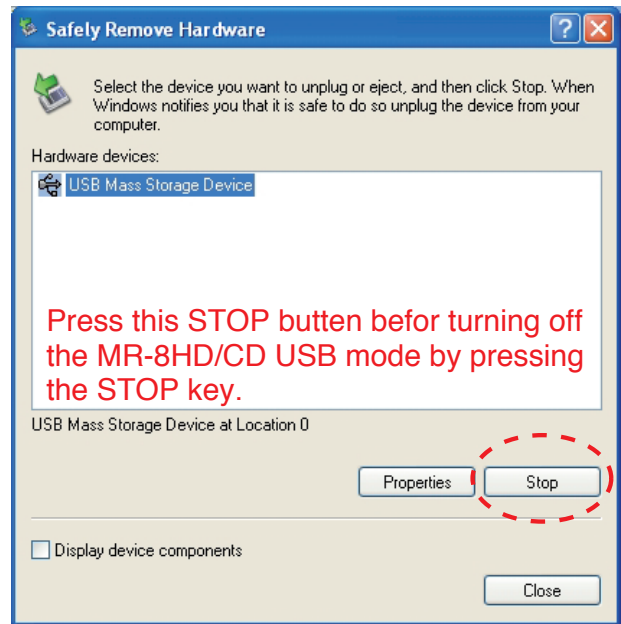
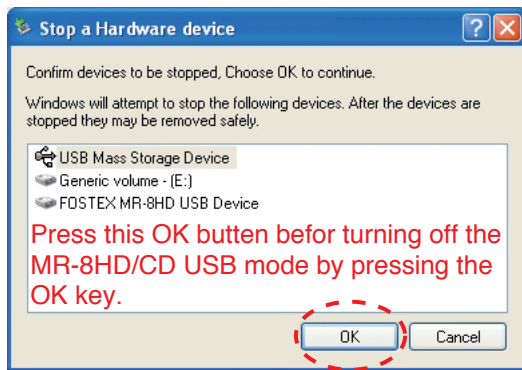


By double-clicking the removable drive (F) (MR-8HD/CD), the window on the right will appear. You can see that the software update file is placed in the top directory tree of the Removable Disk (F).



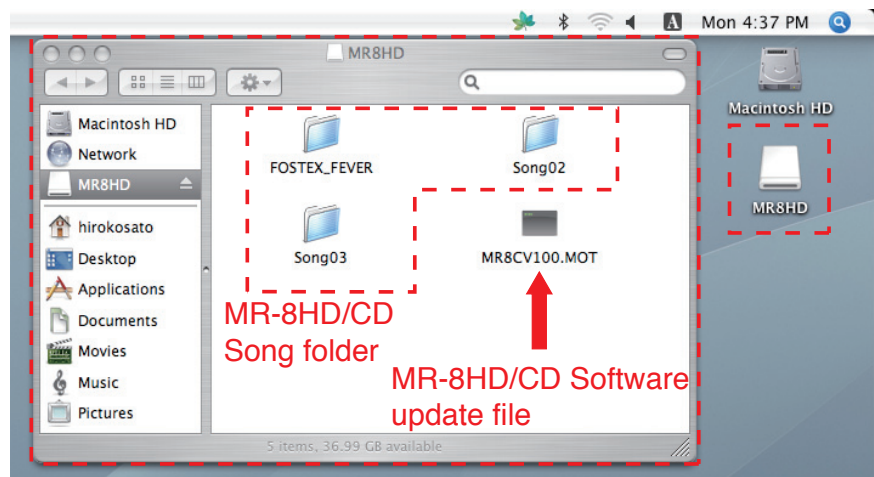
Continue to the next page.

After transferring the software update file is completed, **do not turn off the USB connection by pressing the MR-8HD/CD STOP key. First, you need to safely remove the MR-8HD/CD from PC side by opening the “Safety Removable Hardware” in the tool bar and pressing the “Stop” button on Windows XP/2000 PC.** Then, you can turn off the USB connection from the MR-8HD/CD side.



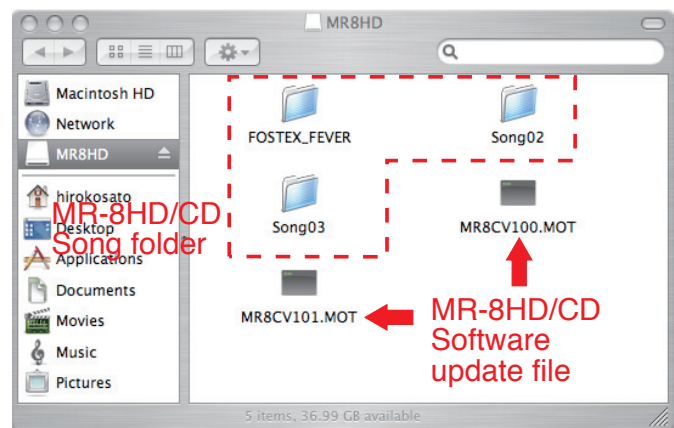
(b) Macintosh OS X

MR-8HD/CD is recognized as “MR8HD/CD” on the Macintosh OS X desktop. By double-clicking the MR-8HD/CD icon, the window on the right will appear. There are three song folders and one software update file “MR8CV100.MOT”.

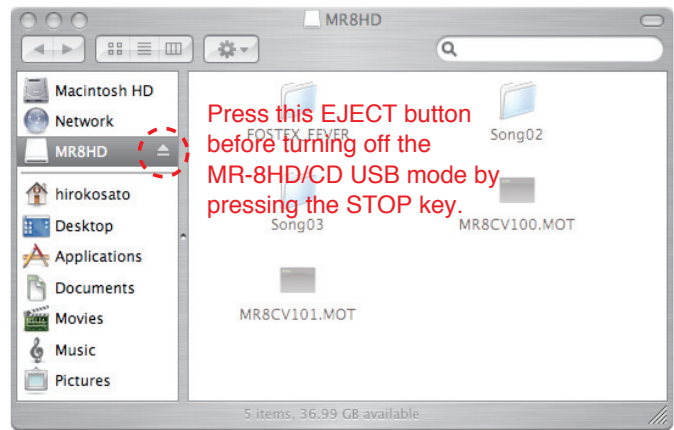


Unzip the software update file with “zip” extension (e.g. MR8HDCD\_V101.zip) normally sent together with a technical bulletin.

Copy and paste a newly created software file with “MOT” (motorola format) extension (e.g. MR8CV101.MOT) onto a root directory of MR-8HD/CD HDD connected to Macintosh (OS X).

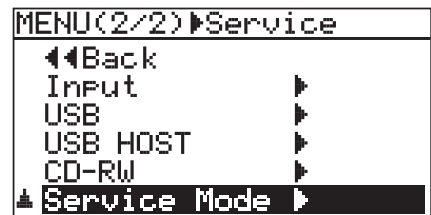
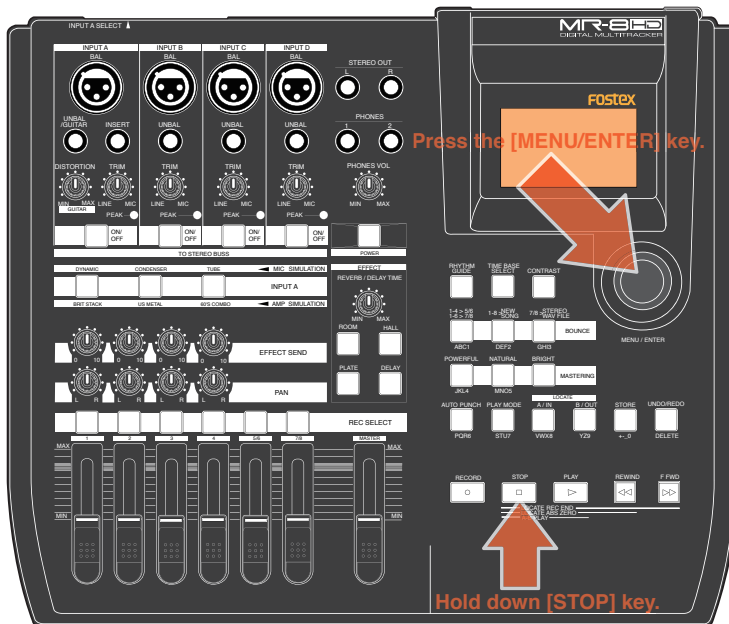


After transferring the software update file is completed, **do not turn off the USB connection by pressing the MR-8HD/CD STOP key. First, as shown on the right, you need to press the EJECT button on Macintosh.** Then, you can turn off the USB connection from the MR-8HD/CD side.

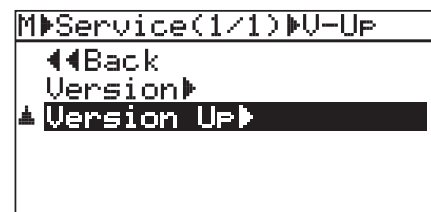


**CAUTION:** There is a case that it takes time for PC or Macintosh to recognize MR-8HD/CD as an external device. While the “ACC” (access) indication on the upper right of the MR-8HD/CD LCD is flashing in the USB mode, do not disconnect the USB cable between MR-8HD/CD and PC/Macintosh.

- 13) Disconnect the USB cable between MR-8HD/CD and PC / Macintosh.
- 14) On MR-8HD/CD with normal display appears, press the [MENU/ENTER] dial while holding down the [STOP] key to access the Service Mode menu.

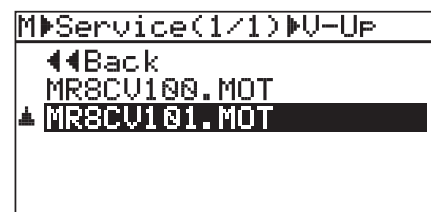


- 15) Rotate the [MENU/ENTER] dial and select the “Service Mode” menu.
- 16) Press the [MENU/ENTER] dial.
- 17) Rotate the [MENU/ENTER] dial and select the “Version Up” menu.



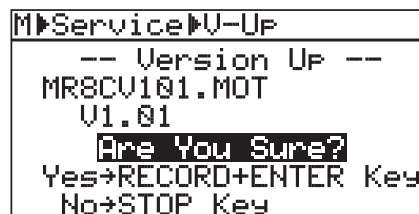
- 18) Press the [MENU/ENTER] dial.
- 19) Rotate the [MENU/ENTER] dial and select a software update file with the version number you would like to update.

**NOTE:** As long as the file name is different, up to five software update files can be placed in the root directory.

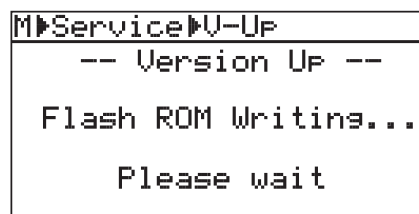
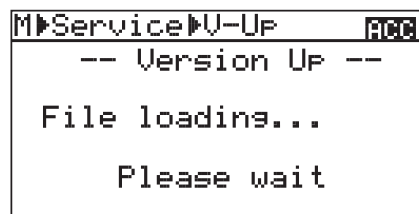


- 20) Press the [MENU/ENTER] dial.

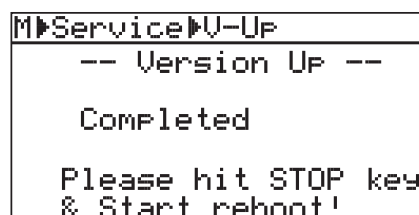
21) The selected software file is displayed together with the software version number. To go on, press the [MENU/ENTER] dial while holding down the [REC] key.



22) The software updating procedures begin. “File loading...”, “Flash ROM Erasing...” and “Flash ROM Writing...” will appear in order. It will take about one minute to complete the procedures.



23) Upon completion, “Completed!” will appear on the LCD.



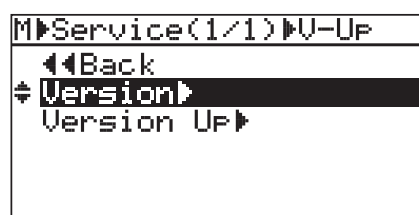
24) Turn off the power once and then back on to complete the software update procedures. In the meantime, confirm the software version number and the programming date displayed for a short instance in the boot-up process.



The software version can be checked by the “Version” Service Mode menu. In the condition with normal display appears, press the [MENU/ENTER] dial while holding down the [STOP] key to access the Service Mode menu. If you do so, the display on the right will appear on the LCD. Rotate the [MENU/ENTER] dial to select the “Service Mode” menu and press the [MENU/ENTER] dial.



Select the “Version” menu and press the [MENU/ENTER] dial.



The display on the right will appear on the LCD. It indicates that the programming date is October 16th, 2006 and the version number is V1.01. To get back to the normal display, press the [STOP] key.

```

M▶Service▶Version
-- Version --
06/10/16 V1.01

STOP Key → Exit
    
```

- 25) Press the [STOP] key to return to the normal display mode. Then, press the [MENU/ENTER] dial to enter the MENU mode.

```

MENU(1/2)▶System
◀◀Back
▶ System ▶
  Song ▶
  Track Edit ▶
  Part Edit ▶
  Rhythm Guide ▶
    
```

- 26) Rotate the [MENU/ENTER] dial and select the “Init Memory” menu.

```

M▶System(2/2)▶Init Mem
◀◀Back
PeakHold Time = 3s
↓ Resolution = Off
Disk Format ▶
▲ Init Memory ▶
    
```

- 27) Press the [MENU/ENTER] dial.  
 28) The display contents on the right appear on the LCD. Press the [MENU/ENTER] dial while holding down the [RECORD] key. This operation will initialize all the system settings to default.

```

M▶System▶Init Mem
- Initialize Memory -
  Initialize
  System Settings
  Are You Sure?
  Yes→RECORD+ENTER Key
  No→STOP Key
    
```

**CAUTION:** The “Initialize Memory” operation sets all the system settings to the default values. For example, the “Disk Protect” setting in the USB menu is set to “ON” after initializing the memory. If you would like to update the software in future, please remember that it has to be set to “OFF” again.